

PathWay® Model 7337 RJ45 Cat5e OnLine/OffLine Switch, with Remote Port, 1U Rackmount

- **Certified For Cat5e Compliance**
- **Absolutely NO data passes through the switch when in OffLine Position.**
- **The Ultimate Firewall!**

INTRODUCTION

The PathWay® Model 7337 RJ45 Cat5e Online/Offline Switch with Telnet and GUI Remote allows the user the capability of connecting two separate devices, ports A and B, via Online or Offline connection. The Model 7337 is enclosed in a 1U, full rack size, all metal, black chassis designed to provide EMI/RFI shielding and fit in a standard 19" rack.

The switch may be controlled manually via the front panel pushbuttons. Remote Control access can be accomplished using an Ethernet 10/100BASE-T connection via Telnet commands or GUI.

FEATURES:

- Online switch position connects Port A to Port B
- Offline switch position disconnects Port A from Port B
- The RJ45 switch ports are transparent to all data.
- All ports are located on the rear panel.
- **Certified for Cat5e compliance.**
- Switch locally via a front panel pushbutton or remotely via the Ethernet Remote port or the Graphical User Interface.
- REMOTE port allows change of switch position, monitor of switch position, and front panel pushbutton lock/unlock control.
- Control of the switch position from a 10/100Base-T LAN Ethernet environment.
- Remote Control Telnet Command Interface that allows the user to control switch position, lockout front panel operations, obtain switch status, as well as query firmware version number.
- Graphical User Interface that allows the user to control switch position, lockout front panel operations, obtain switch status.
- Front panel LED's display switch position and continue to pass data during power loss.
- Attractive metal black box packaging provides EMI/RFI shielding.
- One year warranty against manufacturer's defects.
- Custom length DB9 cables available for your switch installation.



SPECIFICATIONS:

PORT CONNECTORS: (2) RJ45 female connectors, labeled A and B.

COMPLIANCE: Interface meets or exceeds Cat 5e performance.

FRONT PANEL CONTROL: (1) Manual pushbutton allows local switching.

DISPLAY: (2) Red LED's display switch position and power status.

REMOTE CONTROL: (1) DB9 female connector on rear panel accepts Telnet commands or Graphical User Interface for Remote Control Operation.

POWER: UL approved 100VAC-240VAC, 50Hz-60Hz wall mount power module supplies 12 VDC, 500 mA to the unit. Has 2-prong, US, non-polarized plug.

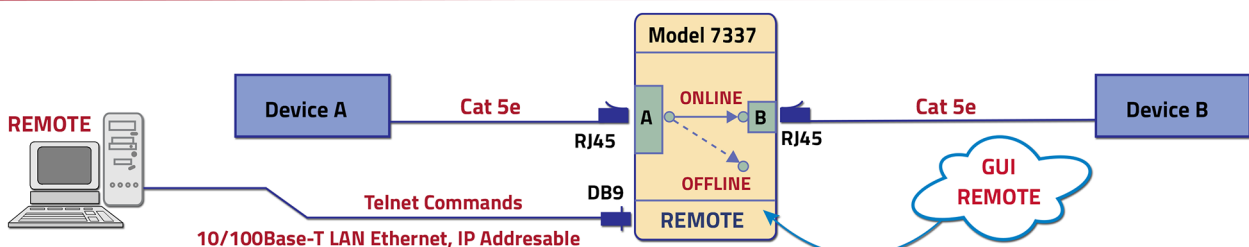
DIMENSIONS: 19.0" W x 1.75" H x 8.15" D.
(48.3 x 4.4 x 20.8 cm)

WEIGHT: Approximately 4.1 lbs. (1.9 kg)

WIDE RANGE POWER OPTION AVAILABLE:

(Cat No 517277) **CE, RoHS, and UL** listed table mount power module, 100VAC-240VAC, 50Hz-60Hz for use in place of standard power module that is included with the unit. Has IEC 60320 C14 inlet. **Ideal for international applications.**

PathWay® Model 7337 RJ45 Cat 5e OnLine/OffLine Application with Telnet and GUI Remote Control



Ethernet Remote Port, I.P. Addressable, with GUI

UTILIZING THE USER FRIENDLY REMOTE GRAPHICAL USER INTERFACE SOFTWARE

To connect to the switch from a workstation or computer having access to the LAN that the switch's LAN port is connected to, simply launch a standard web browser and type in the appropriate IP address. The Java Applet will be automatically uploaded from the switch upon connection. The environment requirement for the GUI is Java 1.7 and above.

SOFTWARE FEATURES:

- Access User Interface via standard web browser.
- Easy to use, simple point and click operation.
- Remotely access to control or monitor the Model 7337.
- Users can change the switch's IP address and configuration.
- LAN access gives users across the LAN or over the Internet access to control if user network is configured accordingly.



Figure 1: GUI in a Standard Web Browser.

GUI in DeviceInstaller

The screen captures shows the PathWay® Model 7337 GUI shown in the Device Installer.

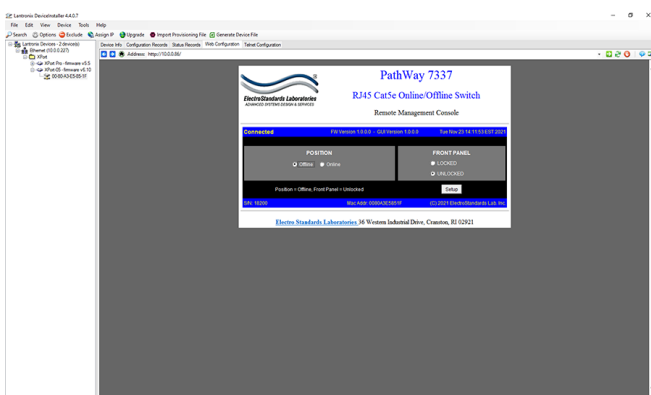


Figure 2: GUI in the DeviceInstaller.

Changing Switch Position & Lock Status,

To change switch position, click on the radio button "Offline" or "Online" as desired. "Locking" and "Unlocking" the front panel pushbutton can be done by clicking "Locked" or "Unlocked" radio buttons.

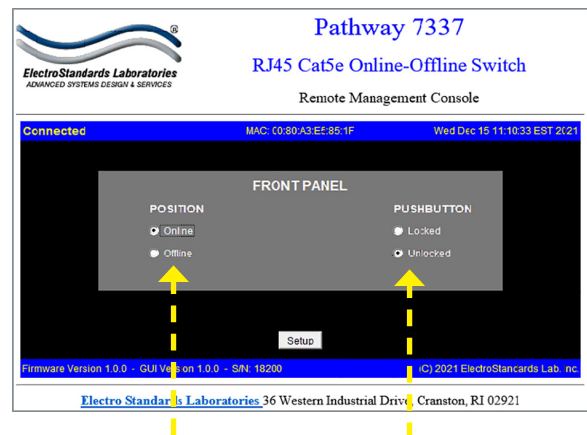


Figure 3: Change Switch position and lockout front panel pushbutton