

PathWay® Model 7294 16-Channel CAT5e RJ45 A/B Switch with Ethernet and RS232 Remote Control

■ IP Addressable!

INTRODUCTION

The PathWay® Model 7294 16-Channel Cat5e RJ45 A/B Switch with Ethernet and RS232 Remote allows the user the capability of sharing a single port interface device connected to the "COMMON" port among two other devices connected to the "A" and "B" ports for each channel with remote access functionality. Remote control access can be accomplished using an Ethernet 10/100BASE-T connection and either Telnet commands or Graphical User Interface through the RJ45 REMOTE port. Alternatively, remote control can be accomplished using RS232 serial commands through the DB9 port.

FEATURES:

- **All sixteen channels are switched simultaneously.**
- All 8 pins of the RJ45 interface are switched via break-before-make electromechanical relays.
- The switch ports are transparent to all data.
- Front panel pushbutton control.
- Front panel LED's display current position and power status.
- RS232 Serial data Remote control to query status, change position, and control front panel lockout.
- Remote control of the switch position from an 10/100Base-T LAN Ethernet environment.
- Remote control Telnet command interface or Graphical User Interface that allows the user to control switch position, lockout front panel operations and obtain switch status.
- Switch maintains position on power loss and continues to pass data.



SPECIFICATIONS:

PORT CONNECTORS: (48) RJ45 female connectors labeled 1-16 in each of the groups "A", "B", and "COMMON".

FRONT PANEL CONTROL: (1) Manual pushbutton allows for local switching.

DISPLAY: (2) Front panel LEDs display switch position and power status.

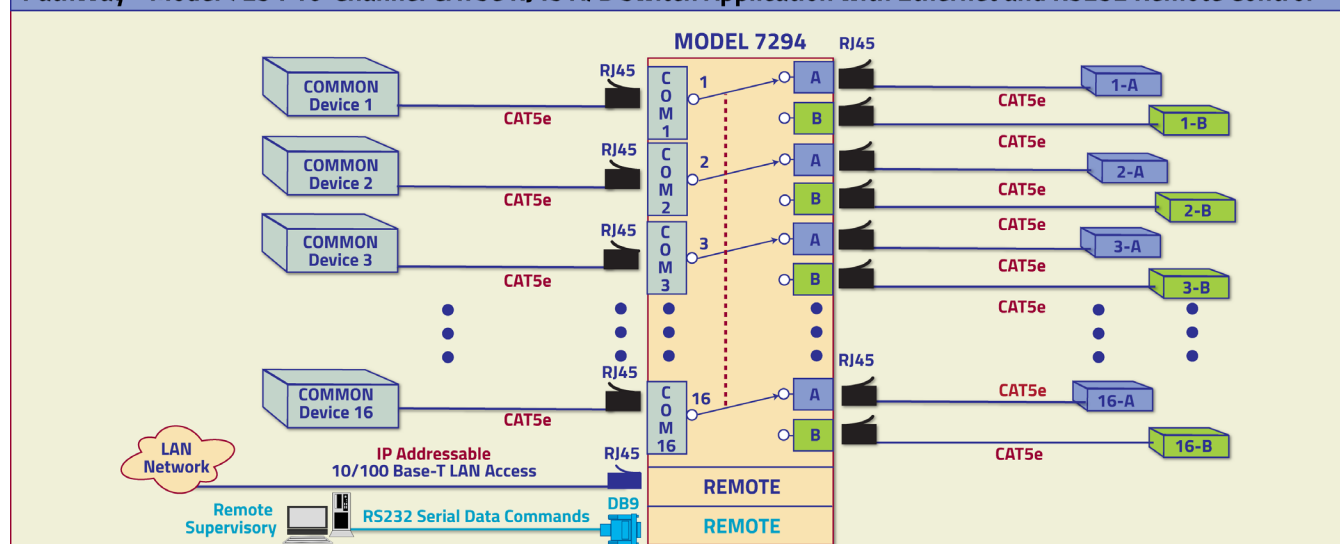
REMOTE CONTROL: (1) RJ45 female connector on rear panel accepts 10/100BASE-T LAN access Ethernet for Remote control operation. A second Remote connector, DB9(F) accepts ASCII RS232 serial data for Remote control operation.

POWER: Requires user supplied 48VDC, 500 mA to operate.

DIMENSIONS: 19.0" W x 3.5" H x 12.0" D.
(48.3 x 8.9 x 30.5 cm)

WEIGHT: Approximately 10.0 lbs. (4.5 kg)

PathWay® Model 7294 16-Channel CAT5e RJ45 A/B Switch Application with Ethernet and RS232 Remote Control



UTILIZING THE USER-FRIENDLY REMOTE GRAPHICAL USER INTERFACE SOFTWARE

To connect to the switch from a workstation or computer having access to the LAN that the Model 7294 LAN port is connected to, simply launch a standard web browser and type in the appropriate IP address. The Java Applet will be automatically uploaded from the switch upon connection. The environment requirement for the GUI is Java 1.7 and above.

10/100BASE-T LAN SETUP

Network Setup

The switch is configured from the factory to use DHCP to automatically get its IP address from a DHCP server on the local area network when connected to the network and powered up. Therefore, a DHCP server is needed on the local area network for the initial configuration. After that, the switch can be configured to use a static IP address. To find the IP address of a switch that it has gotten from the DHCP server, or to reconfigure the IP Address of the switch, use the Lantronix® DeviceInstaller application.

Getting DeviceInstaller

DeviceInstaller requires Microsoft's .NET Framework version 4.0 or higher. If the .NET Framework is not already installed, it must first be installed. The .NET Framework can be downloaded from Microsoft's website, either as a web install, or as a standalone installation. The latest version of DeviceInstaller can be downloaded from Lantronix's website.



Figure 1: GUI in a Standard Web Browser

SOFTWARE FEATURES

- Access User Interface via standard web browser.
- Easy to use, simple point and click operation.
- Remotely access to control or monitor the Model 7294 Switch System.
- Users can change the switch's IP address.
- LAN access gives users across the LAN or over the Internet access to control if user network is configured accordingly.

PathWay® Model 7294 GUI in the Device Installer.

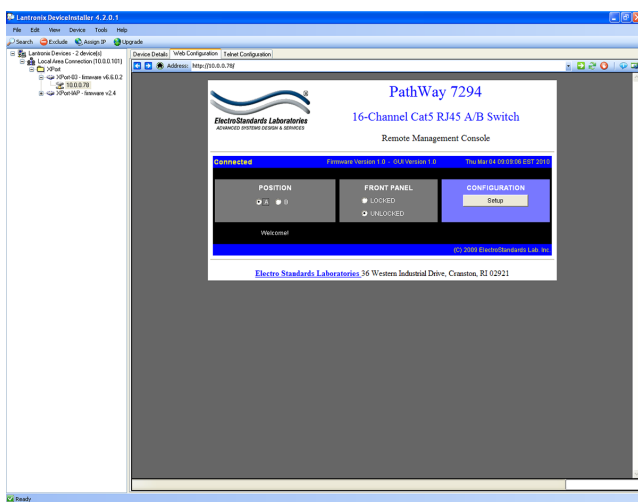
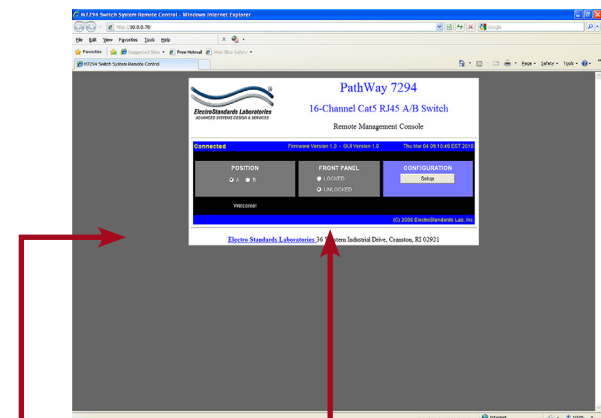


Figure 2: GUI shown in the DeviceInstaller.

CHANGING POSITION AND LOCK STATUS

To change the switch position, click on the radio button "A" or "B" as desired. Locking and unlocking the front panel pushbutton can be done by clicking on the "Locked" or "Unlocked" radio buttons. See Figure 3.



Switch position by selecting "A" or "B".

Lock and unlock the front panel operation

Figure 3: Change the position and lockout from the GUI