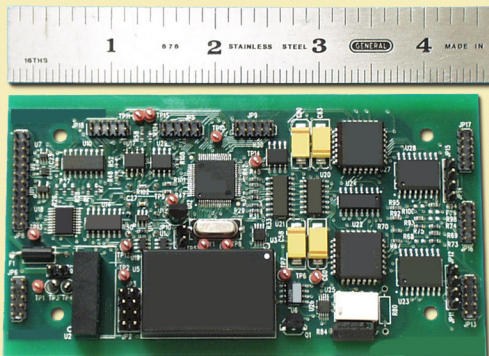


## CellMite® Model 4331-200 LVDT AC Excitation



**CellMite® Model 4331-200** LVDT AC Excitation Dual Channel Embedded Digital Signal Conditioner Board connects directly to two standard AC LVDT (Linear Variable Differential Transformer) transducers and simultaneously generates a serial output for connection to a PC and a +/-10V analog output.

The CellMite® LVDT can be operated with a computer or simply setup by a computer and then used as a stand-alone intelligent LVDT digital signal conditioner with an analog output.

For more information on the CellMite® Model 4331-200 and to see our family of CellMite Force and LVDT Intelligent Digital Signal Conditioners, visit:

[www.ElectroStandards.com](http://www.ElectroStandards.com)

  
**Electro Standards Laboratories**  
36 Western Industrial Drive  
Cranston, RI 02921



**Electro Standards Laboratories**  
ADVANCED SYSTEMS DESIGN & SERVICES

**New!** **CellMite® Force & LVDT  
Intelligent Digital  
Signal Conditioners**



[eslab@ElectroStandards.com](mailto:eslab@ElectroStandards.com)  
[www. ElectroStandards.com](http://www.ElectroStandards.com)

- Force & LVDT & Combo Units
- Wired & Wireless
- TEDS-Tag® Auto ID
- Single and Multi-Channel
- CellView Software

**Search by  
product function  
on WebSite!**

Electro Standards Laboratories  
36 Western Industrial Drive  
Cranston, RI 02921 - Tel: (401) 943-1164



## CellMite® Model 4325B Packed with Features!

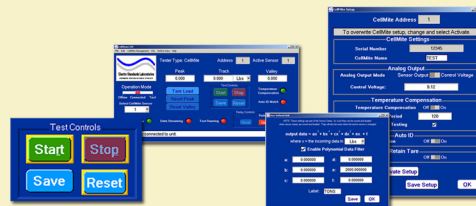


**CellMite® Model 4325B** - A compact DSC that connects directly to a standard strain gage-based load cell, extensometer, or pressure sensor and simultaneously generates a serial digital output for connection to a PC and a +/-10V analog output. Create a turnkey data acquisition system with CellView software.

### CellMite® Model 4325B Features:

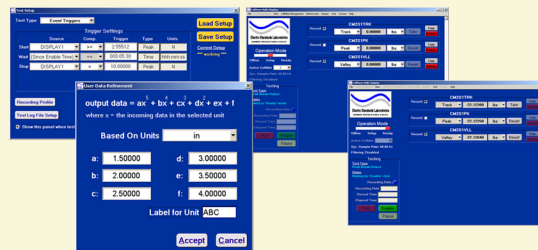
- Single channel
- 16-bit analog output
- 24-bit resolution
- Multiple filter selections
- Storage for 3 calibrated transducers
- Remote sense excitation
- Addressable for serial network
- Tare, peak, valley
- Unit Support: In, Cm, mm, %, Lb, Kg, N, mV/V, User-defined
- TEDS-Tag® Auto ID

## CellView Lite Software EZ to Use, Versatile!



- Turnkey data acquisition system
- Save data, calibration, and sensor test information to Excel spreadsheets
- Guides user through sensor calibration and adding/removing networked CellMite® and CellMite® LVDT
- Select any networked CellMite®
- Tare and reset peak and valley for the sensor
- Save/Load CellMite® unit & sensor setup info
- Set output data with user-defined 5th order polynomial
- Setup a test to start and/or stop automatically
- Control CellMite® solid state output relay switches
- User-programmable analog output voltage range
- Units of In, Cm, mm, %, Lb, Kg, User-Defined

## CellView Multi-Display Software



- Define 8 simultaneous data displays from multiple channels on multiple units.
- Multi-sample rate data acquisition via user-definable data logging profile

## CellMite® Model 4329 Wireless Intelligent DSC



**CellMite® Model 4329** - Wireless DSC features a nonvolatile memory for parameter and calibration storage, the ability to select between 3 transducers, multi-point and mV/V calibration, remote sense excitation, and a 24-bit internal resolution with 16-bit analog output.

### CellMite® Model 4329 Features:

- Connects directly to a standard strain gage, load cell, extensometer, or pressure transducer
- Wireless communications to 1500 ft.
- Wireless network with up to 8 CellMites®, no cables needed
- Simplified distributed process measurements
- Model 4329M Master CellMite® directly connected to a PC with RS232-USB
- Monitor and control networked units with Graphical User Interface (GUI)
- +/-10V analog output can be used for local indicator and control
- Simultaneous analog output and wireless communication